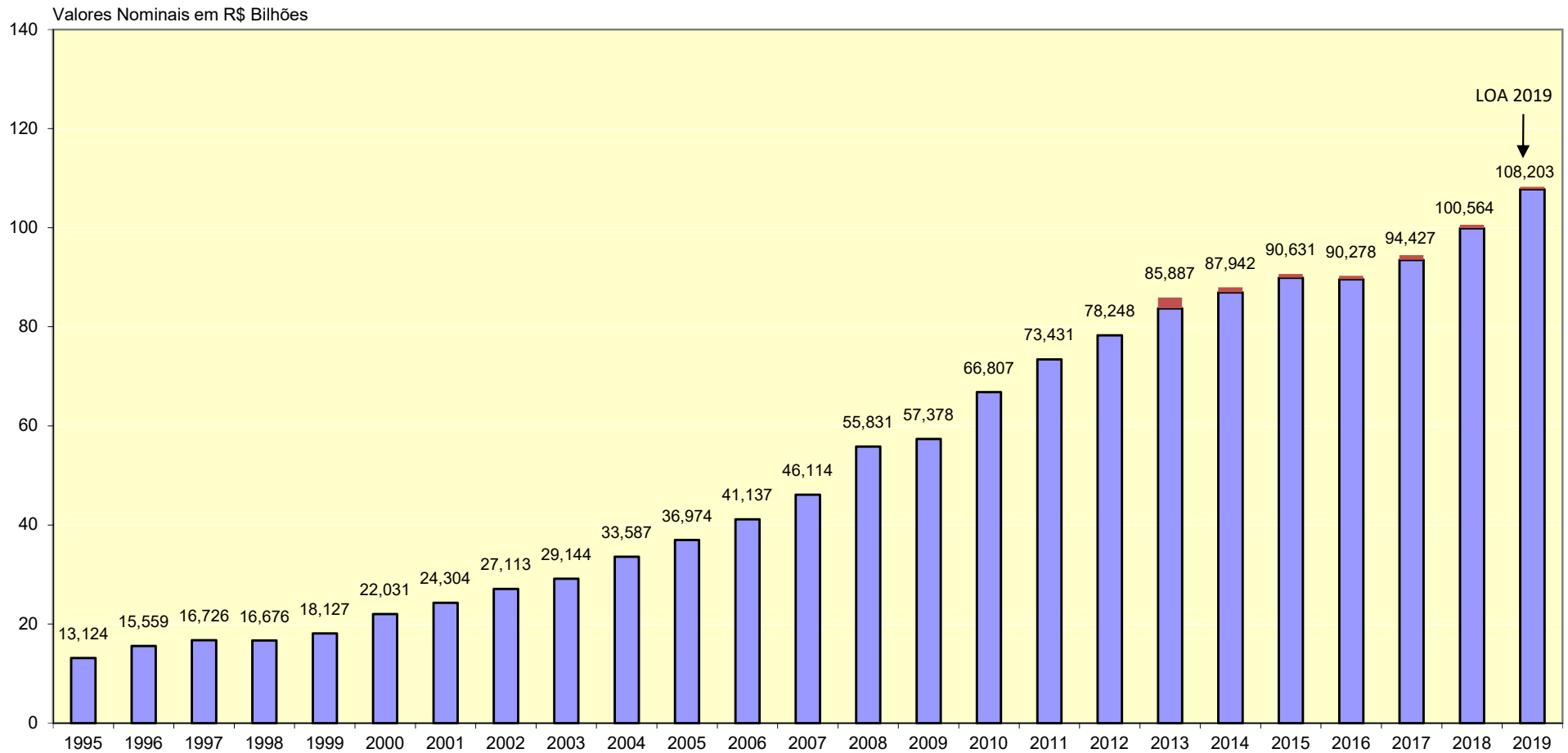


ARRECAÇÃO ICMS - 1995 A 2019 *



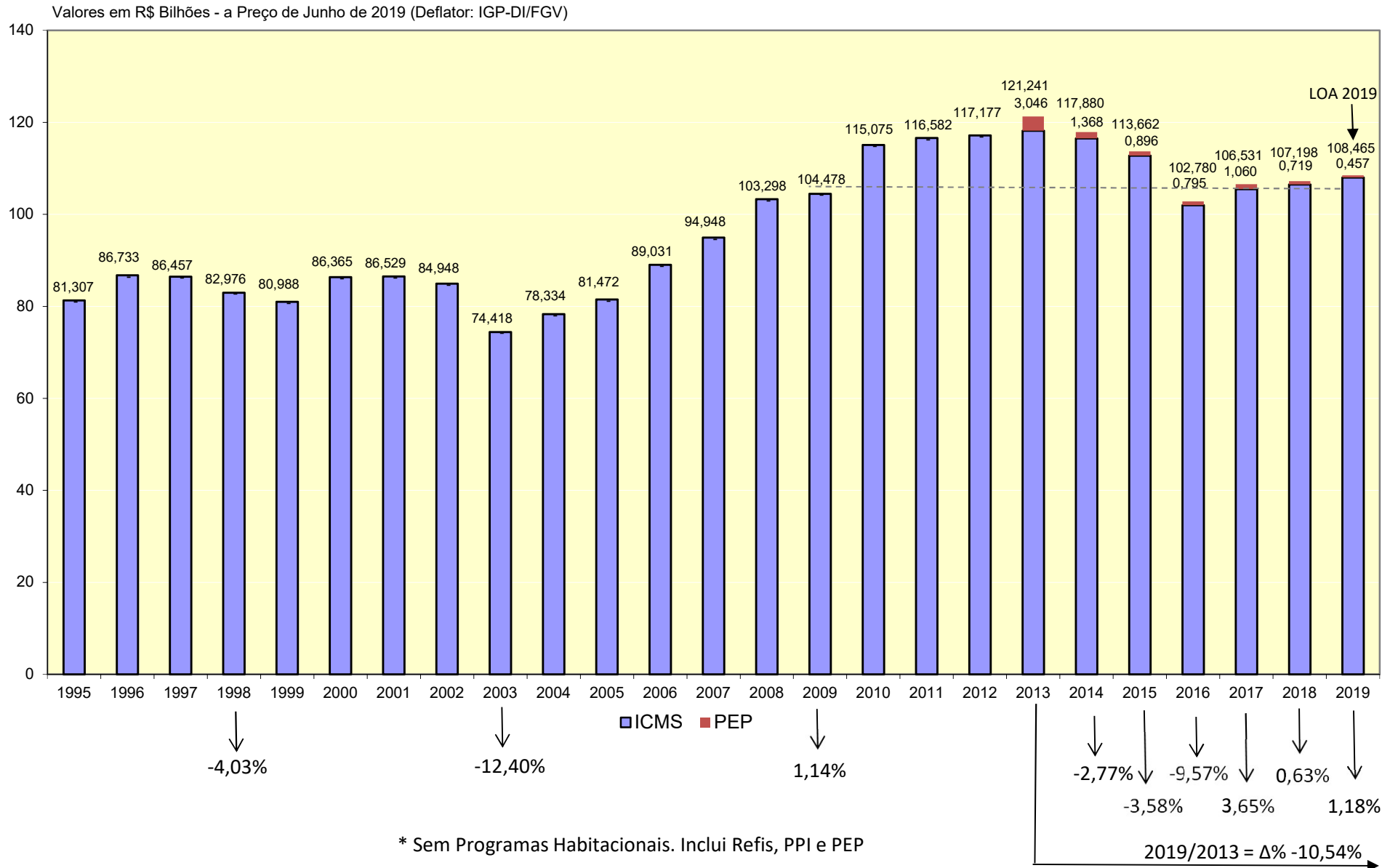
Ano	Valor Nominal	△% sobre ano anterior
2013	R\$ 85,887 bi	-
2014	R\$ 87,942 bi	2,39%
2015	R\$ 90,631 bi	3,06%
2016	R\$ 90,278 bi	-0,39%
2017	R\$ 94,427 bi	4,60%
2018	R\$ 100,564 bi	6,50%
2019	R\$ 108,203 bi	7,60%

■ ICMS ■ PEP

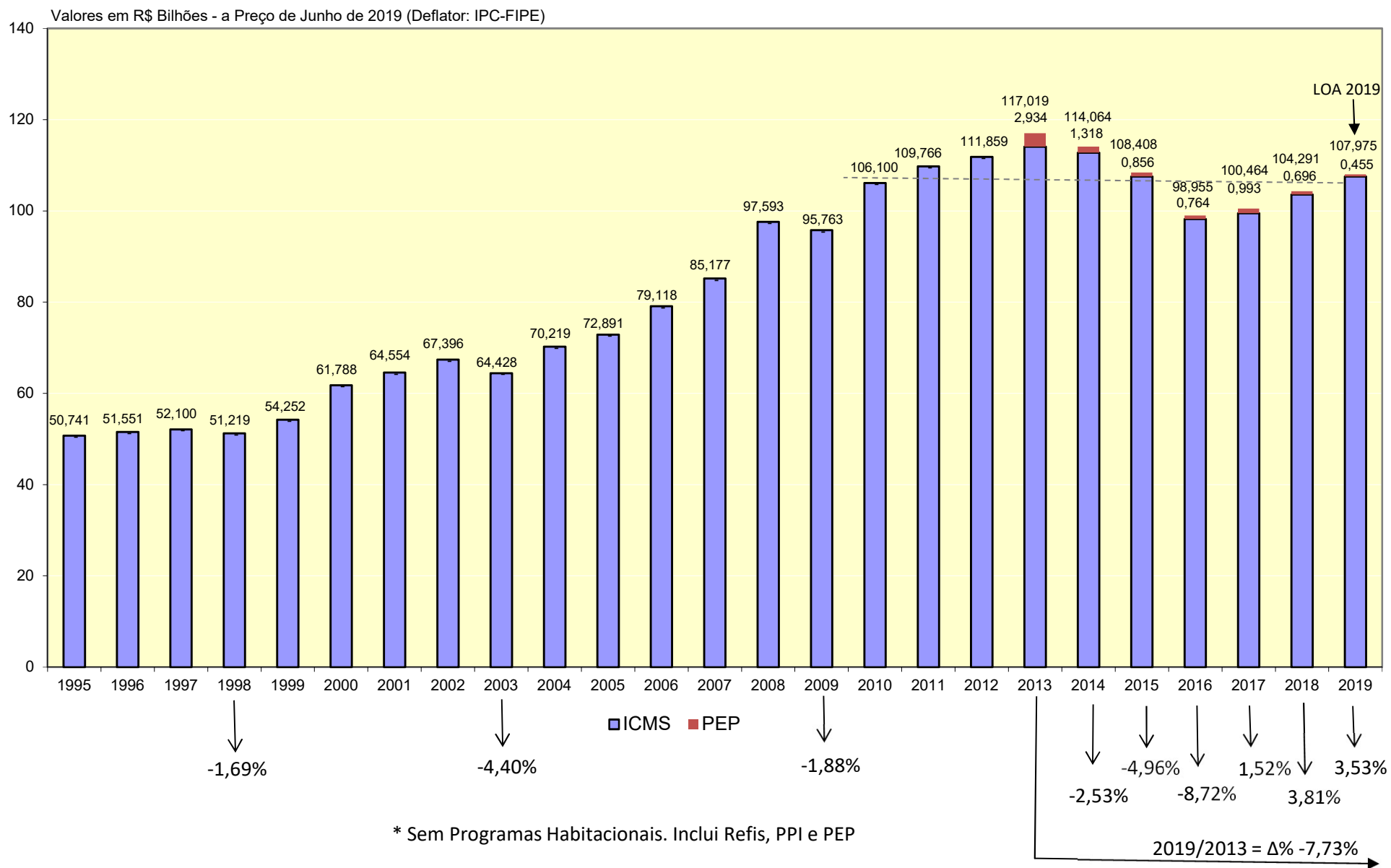
* Sem Programas Habitacionais. Inclui Refis, PPI e PEP

Inflação - Indicador	2014	2015	2016	2017	2018	2019
IPC-FIPE	5,21%	11,08%	6,55%	2,28%	2,99%	3,83%
IGP-DI	3,78%	10,68%	7,15%	-0,42%	7,10%	6,67%
IPCA-IBGE	6,41%	10,67%	6,29%	2,95%	3,75%	3,83%

ARRECADAÇÃO ICMS - 1995 A 2019 *



ARRECADAÇÃO ICMS - 1995 A 2019 *



ARRECAÇÃO DE ICMS - 1995 A 2019 *

